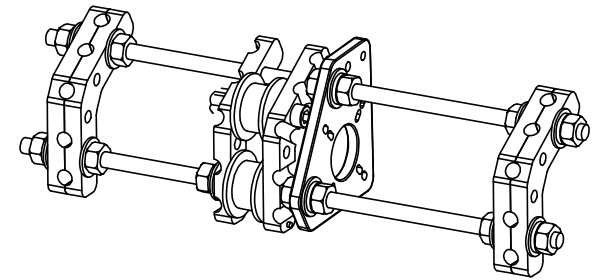
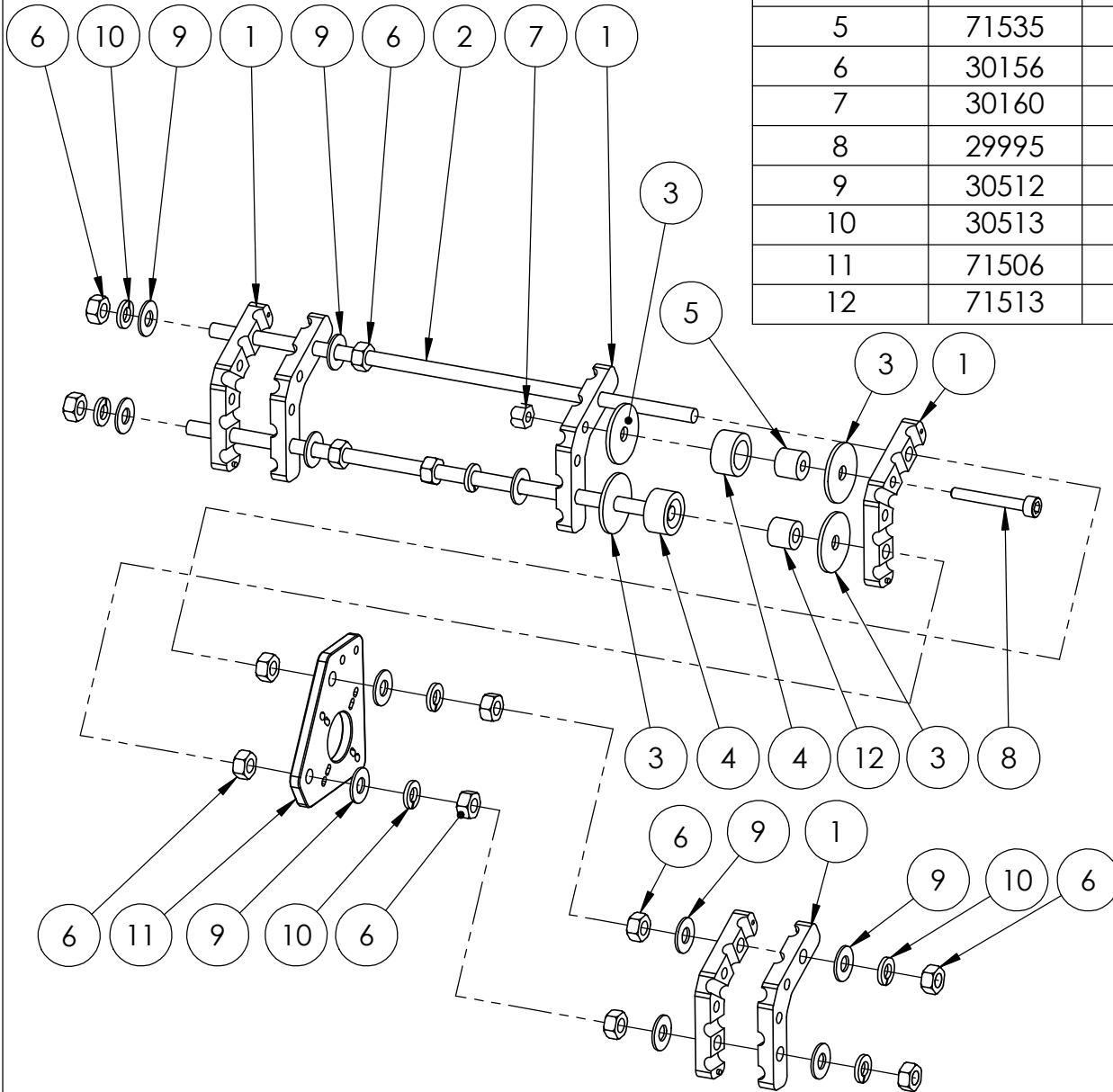


ITEM NO.	PartNo	DESCRIPTION	QTY.
1	71501	Bar Clamp 60 Degree	6
2	71509	1/4-20 Threaded Rod 9-1/2" to 10" Long	2
3	71511	1/4"ID x 1-1/16"OD x 1/16"Thick Plastic Washer	4
4	71543	1/2"ID x 3/4"OD x 0.4" Thick Idler	2
5	71535	3/16"ID x 1/2"OD x 0.46"L Plastic Roller	1
6	30156	1/4-20 Finish Nut	13
7	30160	10-32 Nylon Lock Nut Stainless Steel	1
8	29995	10-32 x 1-1/2"L SHCS Stainless Steel	1
9	30512	1/4 SAE Flat Washer	11
10	30513	1/4 Split Lock Washer	7
11	71506	Motor Mount	1
12	71513	Bushing 1/4"ID x 1/2"OD x .46"L Plastic	1



PROJECT: SeeMeCNC H-1

TITLE: Rear Base Sub Assembly

SIZE	DWG. NO.	REV
<b>A</b>	71581	1

©2012 SeeMeCNC™

5

↑

4

3

2

1