

Frame

Rods:

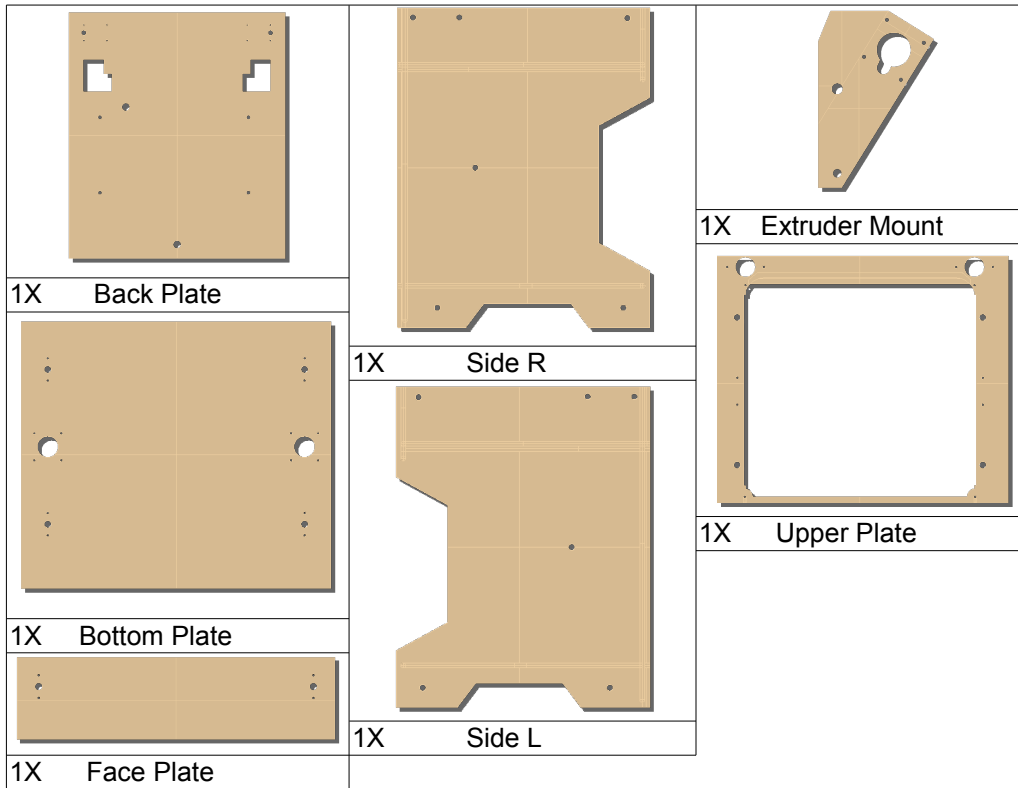
M8 Threaded:

- | |
|----------|
| 1) 400mm |
| 3) 390mm |

Nuts, Bolts, Misc:

- | |
|---------------|
| 6) M8 Cap Nut |
| 2) M8 Nut |
| 10) Zipties |

Frame Parts:



Bed

Nuts, Bolts, Misc:

10) M3X20 Bolt
14) M3 Nut
4) M5 Nut

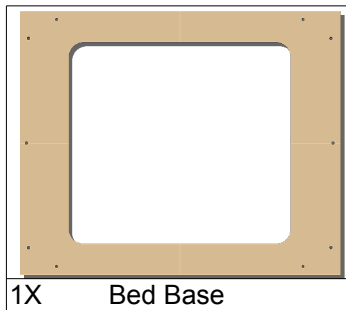
4) 3mm ID Spring

8) LM8UU

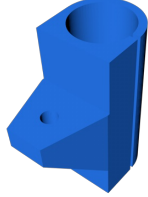
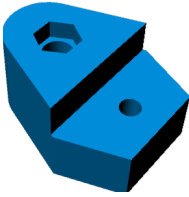
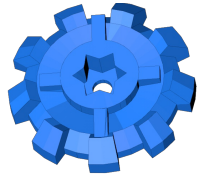
Heated Bed:

1) Heated Bed
1) Thermistor
1) 23in 2-lead wire
1) 19in 2-lead wire

Frame:



Plastics:

	
4X Bed Bushing	2X Nut Trap
	
4X Bed Bushing	

X-Y Carriage

Rods:

8mm Smooth:

2) 315mm

Nuts, Bolts, Misc:

6) M3X20 Bolt

4) M3X40 Bolt

10) M3 Nut

8) M3 Washer

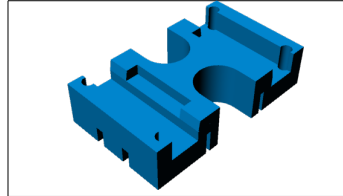
8) #6X5/8 Fender Washer

8) 623ZZ Bearing

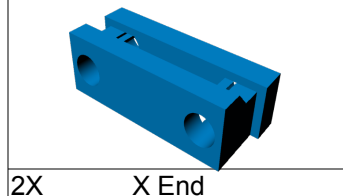
6) LM8UU

6' GT2 Belt

Plastics:

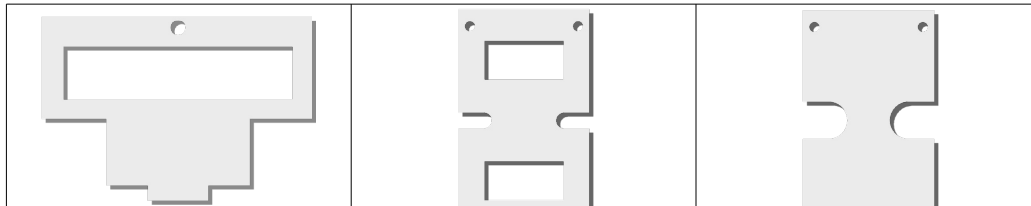


1X Carriage Middle

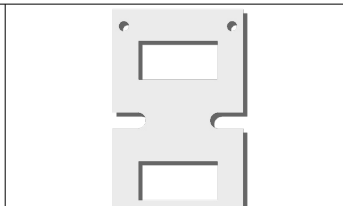


2X X End

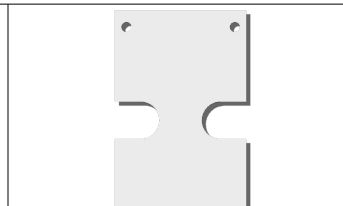
Frame:



1X LM8UU Holder



1X Carriage Top



1X Hotend Mount



1X X Carriage

Extruder (Single)

Nuts, Bolts, Misc:

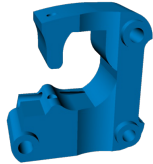

1) M3X6 Set Screw
1) M3X16 Bolt
4) M3X30 Bolt
1) M4X40 Bolt
1) M8X30 Bolt

1) M3 Nut
1) M4 Nut
1) M8 Nut

2) M3 Washer

1) 623ZZ Bearing
1) 4mm Bowden Coupling
23" 4mm Bowden Tube
1) MK7 Drive Gear
1) High Torque Motor
1) Stepstick
1) Heat Sinks

Plastic:

	
1X Extruder Body	1X Extruder Hinge

Hotend:

1) Ceramic heater
1) Kapton roll
6" Heat Resistant Wire Cover
1) Head Thermistor
1) Hotend

Electronics Mount

Nuts, Bolts, Misc:

6)	M2X20 Bolt
5)	M3X10 Bolt
3)	M3X20 Bolt
2)	M3X35 Bolt
4)	1/4-20X1" Bolt

6)	M2 Nut
6)	M3 Nut
4)	1/4-20 Nut

10)	Zipties
-----	---------

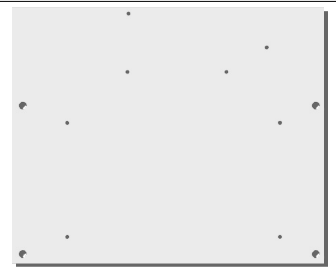
Electronics:

1)	RAMPS 1.4
1)	Arduino Mega 2560
3)	Stepstick
1)	PSU
1)	60mm Fan
3)	Limit Switches
3)	Heat Sinks

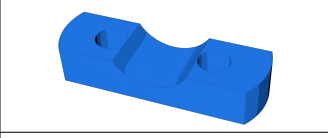
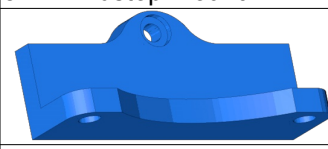
Wires and Connectors:

8)	Tab Ferrules
26)	Butt Splice Ferrules
5)	4 Lead Wires
4)	2 Lead Wires

Frame:


1X Mounting Plate

Plastic:


3X Endstop Mount

1X Fan Mount

Box Final

Rods:

M5 Threaded:

2) 270mm

8mm Smooth:

4) 285mm

2) 315mm

Nuts, Bolts, Misc:

2) M3X6 Set Screw

14) M3X10 Bolt

12) M3X20 Bolt

2) M3X30 Bolt

14) M3 Nut

4) M3 Washer

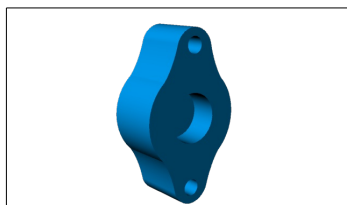
4) #6X5/8 Fender Washer

4) 623ZZ Bearing

2) GT2 Pulley

4) Low Torque Motor

2) ~30mm Vinyl Coupling



6X Rod Cap

Spool Mount (Single)

Rods:

1/4-20 Threaded:

1) 165mm

Nuts, Bolts, Misc:

2) 1/4-20 Nut

1) 1/4-20 Cap Nut

2) 1/4" Washer

LCD

Nuts, Bolts, Misc:

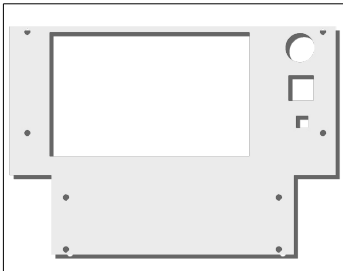
4) M3X10 Bolt
2) M3X20 Bolt

6) M3 Nut

Electronics:

1) LCD

Frame:



1X Mounting Plate
